



H₂ for STH 2400 Z





MONTAGE-BLATT MOUNTING SHEET

EMPFOHLENE MONTAGEHÖHE VOM BODEN
ZUM HÄNDE-/HAARTROCKNER

RECOMMENDED MOUNTING HEIGHT FROM FLOOR
TO HAND/HAIR DRYER

MODEL

	
ST 2400 ST 2400 E ST 2400 ES ST 2400 EC	STH 2400 Z
MIN H ₁ 110 cm	H ₂ 170 cm
MAX H ₁ 120 cm	H ₂ 180 cm

MIN

H₁ 110 cm

H₂ 170 cm

MAX

H₁ 120 cm

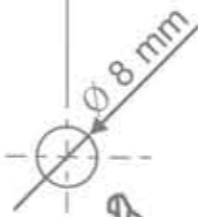
H₂ 180 cm



H₁ for ST 2400, ST 2400E
ST 2400 ES, ST 2400 EC



235 mm



starmix

ELECTROSTAR GmbH

Stuttgarter Straße 36

D-73262 Reichenbach/ Fils

Telefon ++49 (7153) 982-0

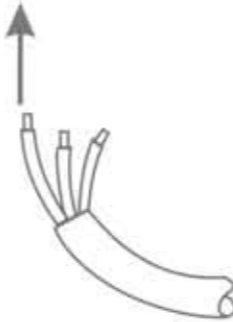
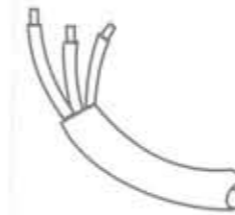
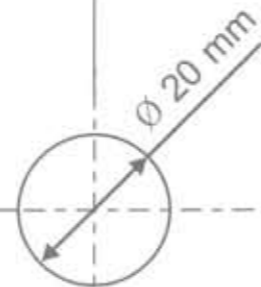
Telefax ++49 (7153) 982-355

info@starmix.de

http://www.starmix.de

37 mm

62 mm



197 mm